



# CITYPOINTE heights

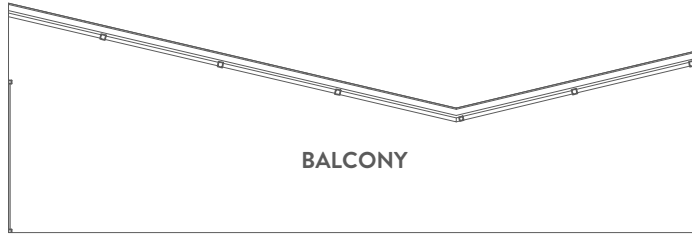
**Alder | 1B**

**Unit Area**  
507 sq.ft.

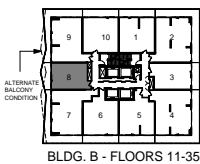
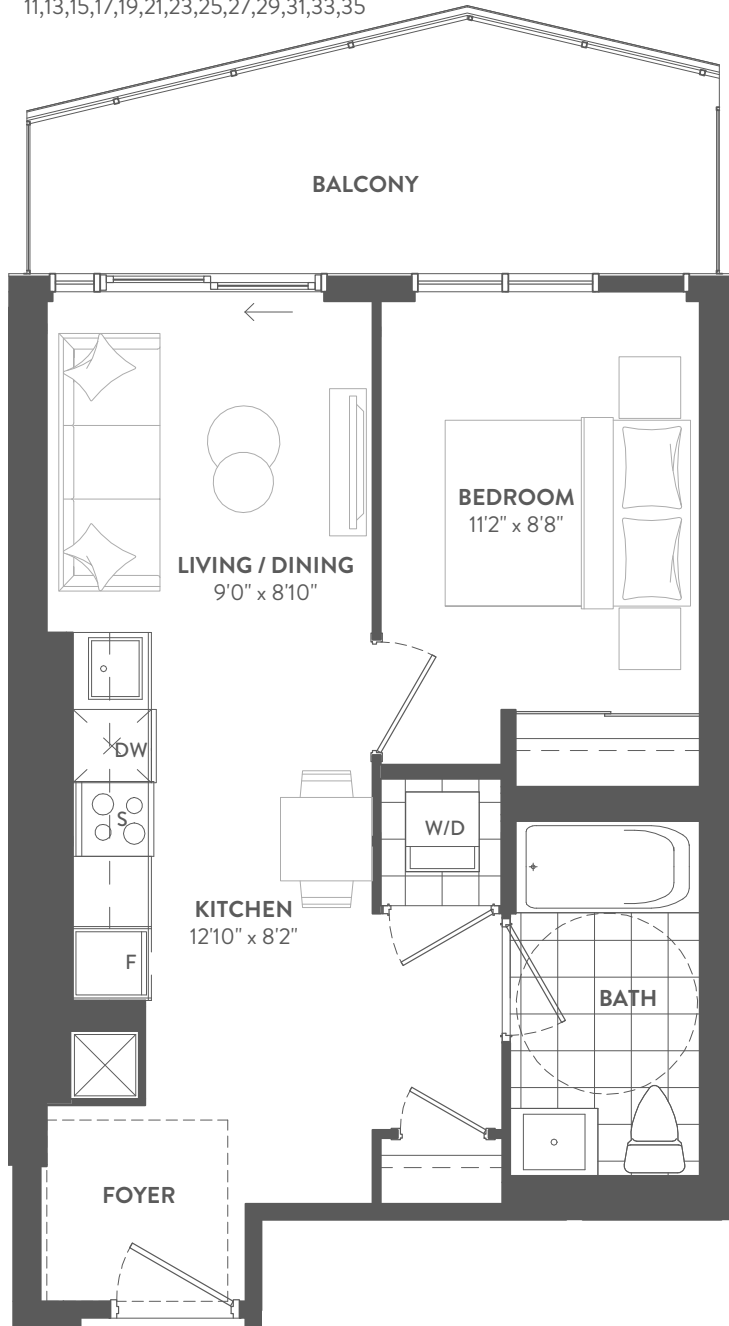
**Outdoor Area**  
93 sq.ft. (odd floors)  
64 sq.ft. (even floors)

**Total Area**  
600 sq.ft. (odd floors)  
571 sq.ft. (even floors)

BALCONY CONDITION FOR FLOORS  
12,14,16,18,20,22,24,26,28,30,32,34



BALCONY CONDITION FOR FLOORS  
11,13,15,17,19,21,23,25,27,29,31,33,35



BLDG. B - FLOORS 11-35

Any stated areas if shown are approximate only and subject to normal construction variances. Actual useable floor space may vary from any stated or depicted floor area and the suite/unit shall be measured in accordance with the provisions set out in the Directive - Floor Area Calculations published by the HCRA. The layout of the suite/unit may be reversed depending on the location of the unit within the project. Any furniture, if any, depicted is for illustration purposes only and does not necessarily reflect the fixtures, finishes, appliances and/or electrical plan of the suite/unit and is not included in the purchase price. Ceiling heights are subject to bulkheads, exposed ducts, dropped ceilings and structural beams, as applicable, pursuant to plans. The view from or through the windows to the exterior cladding of the building may be partially obstructed by materials affixed to the exterior cladding of the building as part of the architectural design elements and/or interior structural columns that may be required pursuant to the recommendation of the project's engineers. The size, location and/or configuration of any windows and glass shown may be changed, varied or mirrored. Any and all materials, measurements, dimensions and/or specifications are subject to change without notice. All illustrations are artist's concept only. E. & O. E. May 1, 2022.



POETRY LIVING

UNIT TYPE 1B