



CITYPOINTE heights

Ivy | 1B + D

Unit Area
664 sq.ft.

Outdoor Area
86 sq.ft. (suite 27)
83 sq.ft. (suite 23)
98 sq.ft. (suites 24-26)

Total Area
750 sq.ft. (suite 27)
747 sq.ft. (suite 23)
762 sq.ft. (suites 24-26)

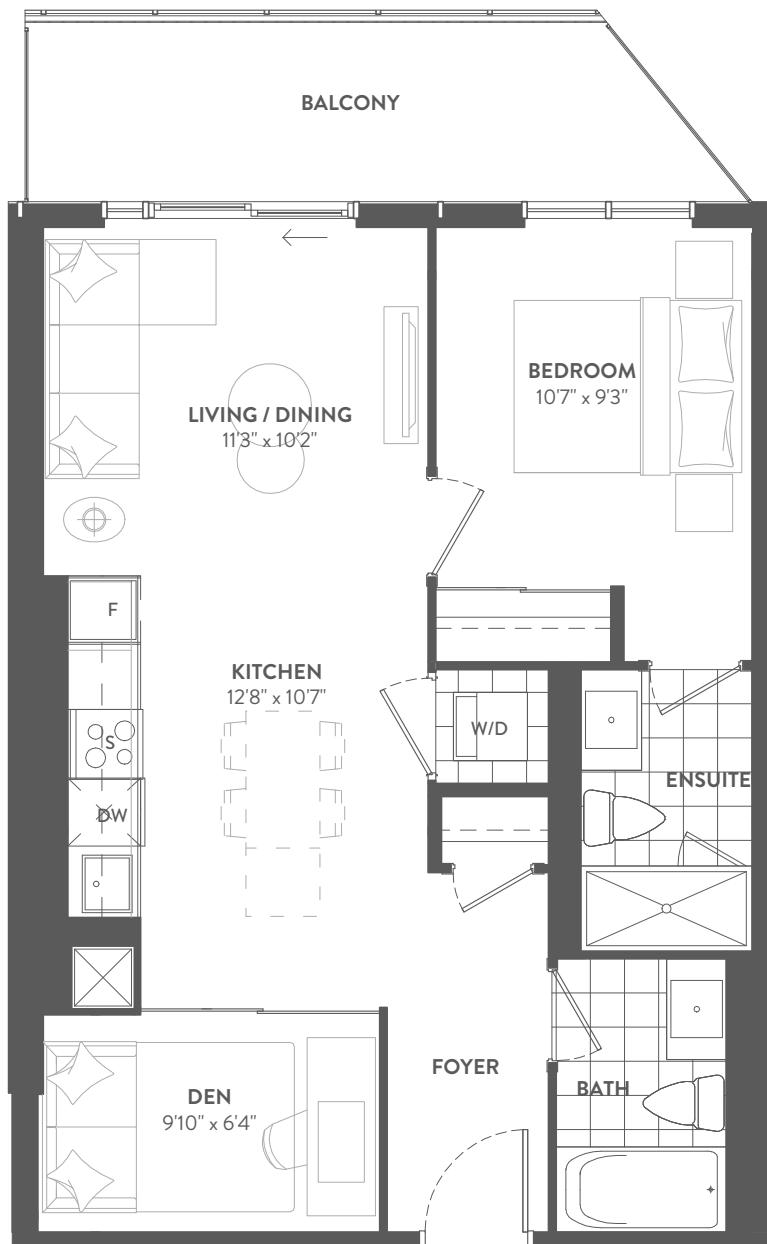


ALTERNATE BALCONY CONDITION FOR FLOORS 3-9



ALTERNATE BALCONY CONDITION FOR FLOORS 3-9

BALCONY CONDITION FOR FLOORS 3-9



FLOOR 3



FLOORS 4-9

Any stated areas if shown are approximate only and subject to normal construction variances. Actual useable floor space may vary from any stated or depicted floor area and the suite/unit shall be measured in accordance with the provisions set out in the Directive – Floor Area Calculations published by the HCRA. The layout of the suite/unit may be reversed depending on the location of the unit within the project. Any furniture, if any, depicted is for illustration purposes only and does not necessarily reflect the fixtures, finishes, appliances and/or electrical plan of the suite/unit and is not included in the purchase price. Ceiling heights are subject to bulkheads, exposed ducts, dropped ceilings and structural beams, as applicable, pursuant to plans. The view from or through the windows to the exterior cladding of the building may be partially obstructed by materials affixed to the exterior cladding of the building as part of the architectural design elements and/or interior structural columns that may be required pursuant to the recommendation of the project's engineers. The size, location and/or configuration of any windows and glass shown may be changed, varied or mirrored. Any and all materials, measurements, dimensions and/or specifications are subject to change without notice. All illustrations are artist's concept only. E. & O. E. May 1, 2022.



POETRY LIVING

UNIT TYPE 1MD