

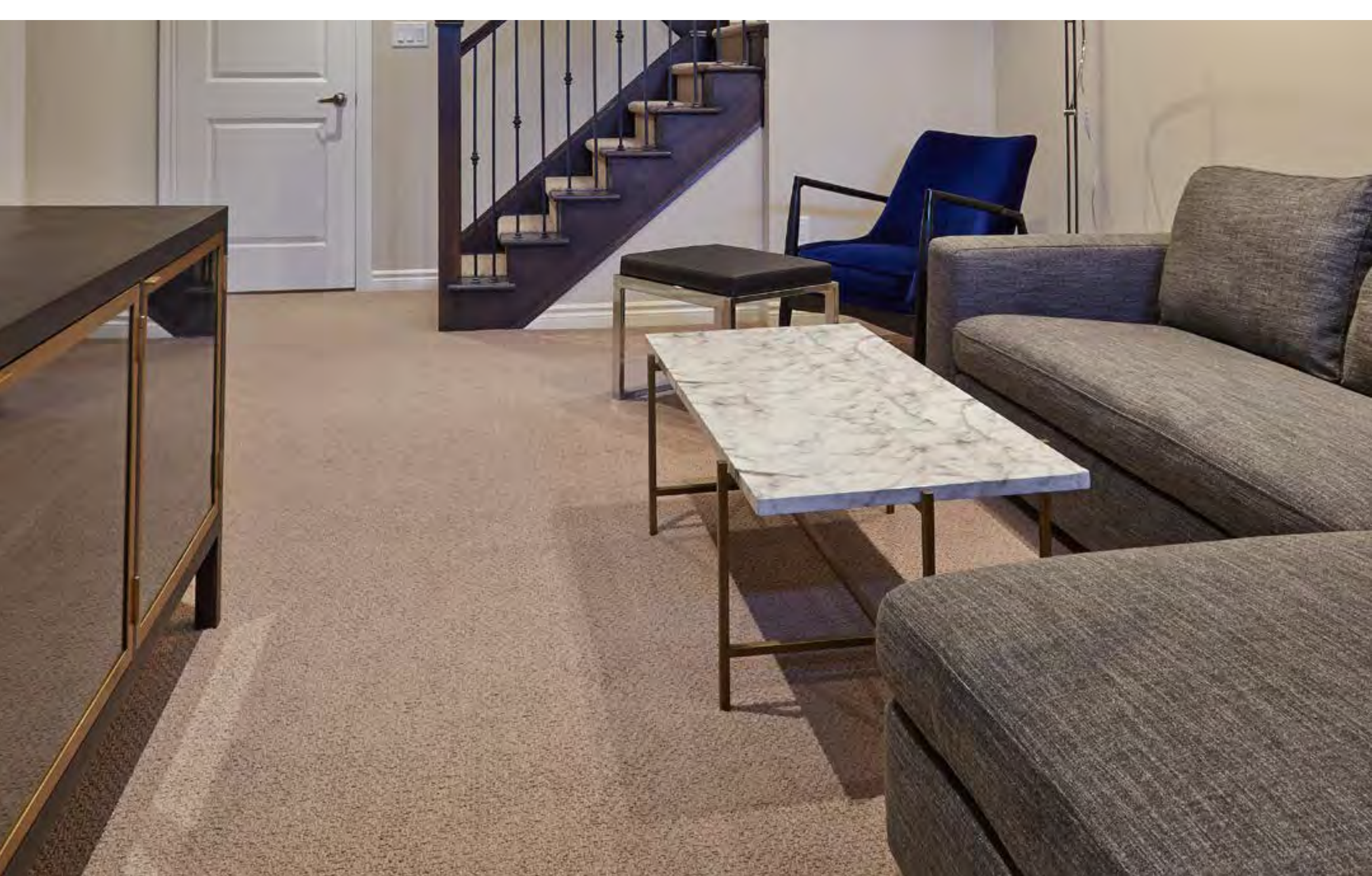


POETRY LIVING

QUICK  
TIPS

# Carpet Flooring

Concerns about carpet seams or spots on carpet should be identified at the Pre-Delivery Inspection (PDI) to avoid any dispute between the Builder and homeowner.



**Tip:**

To avoid indentations, do not use metal domes on furniture.

Variations in the shading of some carpet are evident when the nap runs in different directions. The nap of the carpeting should run in the same direction in each room. It is acceptable for the transition to change between rooms or areas such as doorways and thresholds.

## Discolouration

Light and white coloured carpets may become discoloured at the walls and heating registers due to the filtering process that occurs with forced-air heating. There are a number of causes for this, but it is generally caused by candle burning and pollution in both interior and exterior air quality and is not covered under any warranty.

## Care Maintenance

It is suggested you begin maintaining the carpets upon occupancy to keep their original appearance in the years to come. Clean and remove any spills immediately to prevent spots and stains. Surface dirt and lint in heavy traffic areas should be a daily maintenance. Thorough vacuuming of carpets benefits with the removal of embedded dirt and should be done on a weekly basis. A professional cleaning every 1 to 2 years is recommended to enhance the carpet's appearance and performance.



Click here to visit  
[PoetryLiving.com](https://PoetryLiving.com)